

# The Moving Church News

A Church and Community Magazine

St. Mark's Church Biggin Hill

April - May 2026



**Block Paving • Tarmacadam  
Gravelling • Patios • Walls  
Fencing • Landscaping**

**Call Today for a Free Quotation With No Obligation  
All Work Insured and Fully Guaranteed For 10 Years  
*14 Day Cooling Off Period***

**Office: 01322 517 568  
Direct: 07766 447 939**

**[www.masonscontractors.co.uk](http://www.masonscontractors.co.uk)  
Email: [info@masonscontractors.co.uk](mailto:info@masonscontractors.co.uk)**

**Unit 25, Maypole Crescent, Darent Industrial Park, Erith DA8 2JZ**

***Every Contract installed via this advertisement will  
result in a donation to St. Mark's Church!***

Welcome to the Moving Church News  
the bi-monthly magazine of  
St. Mark's Church, Biggin Hill

## Contents

Services at St. Mark's	4
In Challenging Times	5
Biggin Hill & District Horticultural Society	8
The Arts Society Limpsfield	9
Supporting Ukraine	10
A poem by Grant Tullar	12
Biggin Hill Community Care Association	13
120 years of Westerham Bowling Club	15
The Chartwell Cancer Trust	17
Church Registers	19
Flowers for Church	19
At St. Mark's....	19
Squirrels - 1 <sup>st</sup> Biggin Hill Scouts	20
Guarding the Green	23
Biggin Hill Health & Wellbeing Café	24
Coffee Morning at St Mark's	24
Easter at St. Mark's	25
Hardy Annuals for Quick, Colourful Blooms!	26
Community Telephone Numbers	30
The Next Moving Church News	31
Advertising in the Moving Church News	31
Keeping up with everything at St. Mark's	31

Cover photo by Neelam courtesy of Pixabay

# St. Mark's Parish Church, Biggin Hill

Church Road, Biggin Hill, Kent, TN16 3LB  
Parish office: 01959 577816  
Email: admin@movingchurch.org  
St Mark's website: www.movingchurch.org

Vicar - The position vacant at this time.

Church Wardens	Patrick O Sullivan	01959 572684
	Caroline Budimir	01959 576093

**For Hall Bookings, Baptism, Wedding and general enquiries,  
please contact the Parish Office.**

**Office hours: Monday, Wednesday, Thursday  
9.30 am to 12 noon**

## Services at St. Mark's

First Sunday in the month  
10.30am All Age Worship  
(Except for Easter Sunday - see page 25)

Other Sundays  
10.30am Parish Communion

Wednesdays  
10.00am Holy Communion Service

## In Challenging Times..

Recently, I went to the O2 arena to see the singer, Raye. The concert was a sellout and I must say that she was amazing! Her voice has incredible range and her repertoire ranges from Soul to Hip-Hop, Jazz to Rap and beyond. She hails from Croydon and is proud of that, loving being in front of such an audience on home territory. Yet apart from her hit songs, she was passionate about finding ways to help people get through difficult times in their lives. At one point she spoke about her mother whose words resonated with her. Words that she used as a mantra when times were hard. Those words were 'It's gonna be alright!'. It's gonna be alright!. She had the audience say those words over and over. It's gonna be alright!. Sometimes almost whispering them and then rising to a crescendo. Twenty thousand people all together. It was amazing.

It started me thinking about what words can help us in times of challenge? Do you have special words which give you hope? Give you solace? Give you peace? In these days of technology, I turned to Google and AI to see what might come up. Here are a few suggestions:

*The only thing we have to fear is fear itself - Franklin D Roosevelt*

*No need to hurry. No need to sparkle. No need to be anyone but oneself - Virginia Woolf.*

*It is in our darkest moments that we must focus to see the light - Aristotle*

*Nothing is impossible. The word itself says 'I'm possible!' - Audrey Hepburn*

There are far too many suggestions to repeat them all here! Some are very helpful and some are rather bizarre. If we live our lives to the full, we will experience wonderful, joyous times which create amazing memories but there are

also challenging days and unbearably sad times. I love music and I love singing and often find myself swept along in the moment by words and tunes which become earworms (For those unsure of what this means... when a song just keeps repeating in your head, you find yourself singing it over and over again and it stops you sleeping because it is still there, in your ear!). I do find myself singing loudly to Bruce Springsteen's 'Born to Run' and yet who can resist 'Let it Go!' from Frozen? I sing in a local Rock Choir but also in St Mark's church choir so I also love such Hymns as 'In Christ Alone' and 'I the Lord of Sea and Sky'. I am sure many of you will know 'Amazing Grace' which is a very soulful sound but one of great hope.

Of course, the Bible is a great source of hope and strength to those in need and I am regularly amazed at how relevant many of the words are to today's people. For example,

*'Be strong and courageous. Do not be afraid, for the Lord your God goes with you: he will never leave you nor forsake you.'*  
Deuteronomy 31:6.

*'Therefore encourage one another and build each other up'*  
1 Thessalonians 5:11. For me the greatest passage of hope is Psalm 23. But I do need to hear it in the St James version, probably because this was the version I grew up with and newer translations were not available then! And I can quote it word for word..

*'The Lord is my shepherd I shall not want. He maketh me to lie down in green pastures: He leadeth me beside the still waters. He restoreth my soul: he leadeth me in the paths of righteousness for his name's sake. Yea, though I walk through the valley of the shadow of death, I will fear no evil: for thou art with me; thy rod and thy staff they comfort me.....'*

My final sharing with you has to be one of the most famous poems entitled 'Footprints in the Sand' by Mary Stevenson. Whilst this is not a direct quote from the Bible it reflects themes of God's presence and comfort and this truly resonates with me.

*One night I dreamed I was walking along the beach with the Lord.  
Many scenes from my life flashed across the sky.  
In each scene I noticed footprints in the sand.  
Sometimes there were two sets of footprints,  
other times there were one set of footprints.*

*This bothered me because I noticed  
that during the low periods of my life,  
when I was suffering from  
anguish, sorrow or defeat,  
I could see only one set of footprints.*

*So I said to the Lord,  
'You promised me Lord,  
that if I followed you,  
you would walk with me always.  
But I have noticed that during the most trying periods of my life  
there have only been one set of footprints in the sand.  
Why, when I needed you most, you have not been there for me?'*

*The Lord replied,  
'The times when you have seen only one set of footprints in the sand,  
is when I carried you.'*

Thank you for letting me share my thoughts with you. Maybe it has set you thinking a little about what or who brings you hope and support. If there is anyone in particular who brings you these precious things, do take the time to tell them so.

**Spread the love!**

God Bless you.

Caroline Budimir.

Churchwarden -St Mark's Church.

PS. If you would like to look up the passages mentioned search for Bible Gateway and it will offer you many versions of the Bible. St James's, Good News or New International Version are good ones to try!

ALLENBY

COACH HIRE

DAY TRIPS BIGGIN HILL AREA

PICK UP – BUS STOP OPPOSITE WAITROSE, MAIN ROAD, BIGGIN HILL

All Aprils Trips are now full

Friday 8 May – Hatfield House Craft Fair, Hertfordshire - £35pp FULL  
Monday 11 May – Day Trip to Worthing - £26pp  
Tuesday 19 May – London Boat Trip Little Venice to Camden Lock return - £52pp  
Wednesday 27 May – Day Trip to Colchester - £30pp  
Friday 29 May – St Mary's House & Gardens, Bramber, Sussex - £42pp  
Monday 1 June – Day Trip to Ramsgate or Margate - £26  
Thursday 4 June – Greys Court House & Gardens, Henley on Thames - £45pp NT £26pp  
Thursday 11 June – Waddesdon Manor & Gardens, Buckinghamshire - £50pp NT £27pp  
Tuesday 16 June – Weald & Downland Museum, Sussex - £40pp SN £41pp AD  
Thursday 18 June – Kentish Lady Boat Trip & Fish & Chips, Maidstone - £66pp  
Tuesday 23 June – Day Trip to Home Bay - £26pp  
Thursday 25 June – RHS Wisley, Guildford - £41pp RHS Member £26pp  
Friday 3 July – Parham House & Gardens, Sussex - £41pp  
Thursday 9 July – Day Trip to Bexhill or Hastings - £26pp  
Wednesday 15 July – Day Trip to Bognor Regis or Littlehampton - £26pp  
Monday 20 July – Day Trip to Southend on Sea - £27pp  
Thursday 23 July – Fawley Towers Sitcom, The Marlowe Theatre, Canterbury - £81pp  
Friday 24 July – Penshurst Place, Kent - £41pp  
Tuesday 28 July – Basingstoke Canal Boat Trip & Pub Lunch, Hampshire - £62pp  
Tuesday 18 August – Highclere Castle - £48pp

Tel: 01883 336095

Email [enquiries@allenbycoachhire.co.uk](mailto:enquiries@allenbycoachhire.co.uk)  
[www.allenbycoachhire.co.uk](http://www.allenbycoachhire.co.uk)

BIGGIN HILL & DISTRICT HORTICULTURAL SOCIETY

GARDENING & LOTS MORE!

*"The Best therapy for health, happiness, creativity and well being!"*

We have eight interesting talks a year, three shows, plus an annual plant sale and seed swap. Whilst we are mainly about gardening we have other areas for you to get involved in like handicrafts, cooking, painting, photography, floral art and we are holding a craft fair in October. We are also developing the children's section in shows and encouraging them to garden and look after the environment.

We are a friendly bunch so why not come to one of our events where you will find members of the committee who are willing to give you gardening advice. You don't have to be a member to come along or even to enter our shows but if you do want to join our society, please contact our membership secretary.



Helen Wanford on 07866 706165

*(One years membership £10 per household)*

Why not follow us on: Facebook: Biggin Hill Horticultural Society or visit our Website: [www.bigginhillhorticultsociety.co.uk](http://www.bigginhillhorticultsociety.co.uk);

## The Arts Society Limpsfield

Our Society began as Limpsfield Decorative and Fine Arts Society over 40 years ago. We have adapted to many challenges over that time, particularly Covid. We cover a wide range of interests: famous artists and lesser, re-discovered artists but also design, films, dance and music.

Our top-quality speakers bring their subject to life in a fun and inspiring way - an enjoyable and memorable event to make you forget your cares! We are also very active in visits, art galleries, historic subjects - The Huguenots for example, London Walks and summer garden and house visits. We have ONE lecture on the last Wednesday of each month (except for March), (there are no lectures in December, July and August), in the afternoon from September to March and in the evening for March, April, May and June, we enjoy an illustrated lecture by a highly qualified speaker in St Peter's Hall, Limpsfield. Afternoon 2.00 for 2.15 pm, Evening at 7.15 for 7.30 pm. Before each session we have a social meeting and meet friends, starting 45 minutes before the lecture. New members and guests are very welcome.

### The Stirling Prize: British Architecture's Oscars by Brian Stator Wednesday 29 April 2026

Limpsfield Church Hall RH8 0DG 7.30pm Guests £10 at the door  
Evening only lecture, refreshments served beforehand.

The Stirling Prize has celebrated the very best contemporary buildings since 1996. Some winners, such as Norman Foster's Gherkin, of 2004, have become enormously successful and appreciated by the wider public. Others have proved harder to love. This entertaining lecture looks at some of the hits, some of the misses, and several buildings that arguably should have won, but didn't. No doubt the audience will have some strong opinions here!

### Miniature Portraits - Tiny Treasures close to our hearts by Cindy Polemis Wednesday 27 May 2026

Limpsfield Church Hall RH8 0DG 7.30pm, Guests £10 on the door  
Evening only lecture, come early to enjoy refreshments

Whether used for diplomatic gifts or tokens of love, between the 16th-19th centuries miniatures were commissioned as small portraits which could be held in the hand or placed inside lockets creating an intimate relationship between the owner and sitter. I look at the history of these tiny treasures of art.

# Supporting Ukraine: A Community Effort with Real Impact

As the war in Ukraine continues through another bitter winter, communities across the country are facing unimaginable hardship. Temperatures have plunged to  $-20^{\circ}\text{C}$ , and are still so low, leaving families in derelict homes, soldiers sheltering in trenches, and many people without reliable heat or electricity. In these conditions, even the simplest items can mean the difference between coping and despair.

Here in Biggin Hill and the surrounding villages, residents have shown remarkable compassion. Week after week, people have come together to collect, sort, and send essential supplies to those who need them most. What began as a small local effort has grown into a lifeline reaching far beyond our parish boundaries.

## What Your Donations Are Providing

Every donated item has a purpose, and every parcel makes a difference. The following supplies remain urgently needed:

- Medical aids such as Zimmer frames, crutches and mobility supports
- First aid items and general medicines
- Warm, waterproof clothing for all ages
- Sanitary pads for both men and women
- Non-perishable food
- Rehabilitation products
- Children's books, stationery, toys and resources for those with minimal English

With the severe winter conditions, additional items are now in high demand:

- Adult male incontinence pads
- Palliative care medicines
- Candles and other safe, heat-giving devices

These are not luxuries — they are essentials for survival, dignity, and comfort.

## Local Hands Making a Global Difference

The Biggin Hill Residents' Association has been hard at work packing shoeboxes filled with gifts for Ukrainian children. These small boxes carry something powerful: hope. Photographs received from Ukraine show children opening their gifts with joy, a reminder that kindness travels far further than we often imagine.

The Biggin Hill Freemasons have also played a generous part, donating £200 towards the cost of the children's presents. Their

contribution has helped ensure that more young people receive something to brighten their days.

This is community spirit at its best — practical, heartfelt, and united.

## How You Can Help

If you have items to donate, or if you know someone who might, collections can be arranged locally. Even a single item can make a meaningful difference.

Please contact: Lynne & Peter Martin 07809 198202 or 07763 215037

Your generosity continues to bring warmth, comfort, and hope to people living through the harshest of circumstances.



## A poem by Grant Tullar, a minister.

My life is but a weaving between my Lord and me;  
I cannot choose the colours, He worketh steadily.  
Oft times He weaves sorrow and I, in foolish pride,  
forget He sees the upper, and I the underside.  
Not till the loom is silent and the shuttles cease to fly,  
will God unroll the canvas and explain the reason why.  
The dark threads are as needful in the Weaver's skilful hand,  
as the threads of gold and silver in the pattern He has planned.

Barry



## Hall for Hire

Weekday mornings, evenings and weekends available

Well equipped kitchen, tables and upholstered chairs  
Secure outside space  
Overhead projector, microphones & hearing loop  
Disabled access and toilets  
Sprung floor for dancing

Maximum capacity 100 people

Apherfield WI Hall  
4 Lebanon Gardens  
Biggin Hill  
TN16 3HA  
aperfieldwihall21@gmail.com

**07849 732964**

• Meetings • Parties • Dance/Exercise Classes • Craft Classes • Toddler/Play Groups •  
Preferential rates and storage for regular hirers

Registered Charity  
No: 1056336



'Helping local people  
over 50 to enjoy life'

## Wednesday Lunch Club

### The Friendly Club!

Enjoy a warm welcome at our **Lunch Club** which is open from 12.15pm until 2pm. A three course meal is provided which is cooked on the premises. Afterwards hot drinks are served. Transport within Biggin Hill may be available.

## Biggin Hill Day Centre

Our Day Centre provides a friendly and sociable environment where you will be supported by our professional care staff.

Start the day with a cuppa and a chat! Morning and afternoon activities.  
Three course lunch cooked on the premises.  
The Centre is open on Tuesdays and Thursdays.  
The Centre provides respite for carers

## Do you have difficulty doing your grocery shopping?

## Assisted Shopping

Our Assisted Shopping takes place on Thursday mornings and is for Biggin Hill residents who live independently but need help with their weekly grocery shop. Call Annette on 01959 700411.

## Art Group

Our Art Group meets on Wednesdays from 2pm. Everyone is welcome from novice to expert. Light refreshments are provided. A small donation is requested for each session.

All places must be booked in advance. For more information, please call us on 01959 577400 or email [bigginhillcommunitycare@gmail.com](mailto:bigginhillcommunitycare@gmail.com).

You can also visit our website: [bigginhillcommunitycare.org](http://bigginhillcommunitycare.org) or scan the QR code.

We hire St. Mark's Hall, Church Road for our Day Centre, Lunch Club and Art Group.



## VOLUNTEER DRIVERS

BHCCA needs help with transport for our members for the Lunch Club (Wednesdays) and the Assisted Shopping (Thursday mornings). If you are able to use your own car to help and would like more details, please call Annette on 01959 700411 (for the shopping) or the Centre number 01959 577400 (for the Lunch Club.)

MASON & COLE  
HOME & GARDEN SERVICES

Any jobs, ideas or unstarted projects  
you haven't been able to get around to?

**GARDEN MAINTENANCE**

*Get ready for spring, clearing,  
shed builds, fences fixed and built,*

**DECORATING & HANDYMAN**

*Need things fixed, flat packs  
any projects. Decorating all aspects*

**HOME EXTERIOR CLEANING**

*Pressure washing drives, patios, facias etc.*

**CAR VALETING**

*Treat yourself your car to a spring clean  
and protect it for the year*

Call or WhatsApp me to see how I can help.

**07850 321224**

Free estimates - Local business  
professional, trusted & fully insured

**DIRTY  
CARPETS?**

**BOOK YOUR  
CLEAN NOW**

**T: 01959 466024**  
**W: carpetbright.uk.com**

**CARPETBRIGHT**  
CARPET & UPHOLSTERY CLEANING

# MINI CABS

**AIRPORT CARS BIGGIN HILL**

**YOUR LOCAL**

**LICENSED MINI CABS**

**01959 540550**

## 120 Years of Westerham Bowling Club

### *A Celebration Under the Presidency of John Tutt*

#### **A Club with Deep Roots (1906–1920)**

Founded in **1906** by *John Allen Hughes Esquire*, the Westerham Lawn Green Bowling Club began on a small, non-regulation green behind the Kings Arms Hotel. Matches were lively—until sunny days were a temptation for hotel customers.

*"It all went very well until customers pulled trestle tables onto the lawn..."*

By **1920**, the club moved to a larger site at Hosey Hill and Brasted Road, marking the first of several important relocations.

#### **A Permanent Home at Costell's Meadow (1949)**

After the Second World War, the Pavilion was moved to its current home at **Costell's Meadow**. This gave the club a permanent base and a social hub that would serve generations of bowlers.

#### **Expansion and Ingenuity (1980)**

With membership booming, the club needed a new clubhouse. An enterprising committee sourced a surplus Bromley Social Services office and rebuilt it on-site. Local legend **Charlie Lobley** stepped in when volunteers struggled with the foundations. He laid the first stone himself and taught the team how to continue.



*"He realised they were out of their depth... and showed them how to do it."*

The club honoured him with a competition still known today as **The Lobley**.

#### **The John Tutt Era**

##### **Early Life and National Service**

Born **7 November 1937**, John Tutt left school at fourteen and entered the world of work through the Labour Exchange. His most memorable chapter came with **National Service**, where he became Staff Driver to a leading skin specialist at Folkestone Military Hospital. Of 420 reservists called up, 418 went to North Africa, one to France — and John remained at Shorncliffe Barracks, driving daily to the hospital.

##### **A Career of Adaptability**

After National Service, John spent 20 years at a small stationery printing firm, rising to executive level before the family business closed.

In **1992**, he launched his own office-furniture company in South Norwood, even supplying tables for the Westerham Club lounge. When the recession hit and many businesses folded, John unexpectedly found himself the owner of a fully furnished show house — No. 4 — and later expanded into a townhouse where he still lives.

### Joining Westerham Bowling Club (2001)

John joined the club in 2001, swapping darts — where he captained the British Legion team — for fresh air and a new social circle.



He became President for the first time during the **100th Anniversary in 2006**, though he jokes that he wasn't chosen as Master of Ceremonies because he was "too gorbliney!"

### Changing Times and New Traditions

The club has seen many

cultural shifts, including the move allowing ladies to wear white trousers instead of skirts. Mixed teams are now common, and the Ladies continue to perform strongly in the Northwest Kent league.

The Covid era brought challenges, with reduced membership and difficulty fielding teams, but the club's spirit endured.

### A Champion at 85

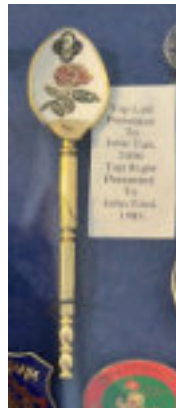
John proudly holds one of the club's many historic trophies, having won it in **2022**.



*"I played in six finals and won three. Not bad for an 85-year-old!"*

### Memories of the Light Blue Jackets

John fondly recalls the era when the best county players — the *Light Blue Jackets* — toured local clubs. Anyone who beat them received a commemorative spoon, awarded at ceremonies attended by dignitaries.



### Looking Ahead: The 120th Anniversary is on 10<sup>th</sup> May 2026

Westerham Bowling Club will celebrate its **120th Anniversary** at Costell's Meadow. Plans are underway for a major celebration.

Anyone interested in joining the club for the upcoming summer season can contact **Lynne Martin** on **07809 198202**. Free coaching is available from the in-house coach.

# The Chartwell Cancer Trust

## House Clearance and Waste Disposal Services

Professional, sympathetic clearance, collection and waste management solutions you can rely on making a stressful task, hassle free. Donated goods are resold through our network of charity shops, the proceeds dedicated to our fundraising projects.



Items unfit for sale are recycled or disposed of safely at a competitive rate, ensuring waste is kept to a minimum.



Our charity shops are located in Selsdon, Tatsfield and Peckham and our services are available across these areas as well as London, the South-East and Kent.



T: 07777 761411

W: [chartwellcancertrust.co.uk](http://chartwellcancertrust.co.uk)

E: [collections@chartwellcancertrust.co.uk](mailto:collections@chartwellcancertrust.co.uk)

*Committed to improving the lives of cancer and leukaemia patients and oncology communities by making a real difference to cancer care.*

## BLINDS • SHUTTERS

### • CONSERVATORY BLINDS

Verticals | Rollers | Venetians | Romans | Panels  
Pleated | Conservatory Blinds | Plantation Shutters











- FREE Professional design advice on all of our products
- Appointments in the comfort of your own home - at times that suit YOU
- A fantastic range of styles, colours and products from top named brands to choose from
- Reliable and friendly customer service
- Expert Measuring and Fitting
- Only using manufacturers who are compliant to BS EN13120

From your Local Specialist Blind supplier based in Biggin Hill

To discuss your requirements call us on: **01959 509179**  
email: [info@benasa.net](mailto:info@benasa.net) or visit us online at [www.benasa.net](http://www.benasa.net)





**LOOKING FOR...  
AN ACCOUNTANT?  
A FINANCIAL ADVISER?**

We combine experience with a proactive approach, providing strategic advice on areas including business finances, tax planning, and wealth management to deliver long-term benefits.


- ✔ Personalised solutions
- ✔ Accounting & financial planning services
- ✔ Helping you live life the way you want to live it

01689 362211  
info@culverhouse-accountants.co.uk  
7 High St, Farnborough Village, B196 7BQ



**Culverhouse & Co.**  
CHARTERED ACCOUNTANTS  
CHARTERED FINANCIAL PLANNERS

**Mobile  
Chiropodist**



Chiropody undertaken  
in the comfort of  
your own home

**Mandy Gifford** M.Inst.Ch.P  
**HCPC Registered**

Registered Member of the Institute  
of Chiropody and Podiatry

**Tel: 07944 763045**

**DAVID RUDD AND SON  
PLUMBING AND HEATING LTD**



**COMMERCIAL &  
DOMESTIC  
ENGINEERS**

Full central heating systems and boiler exchanges carried out for GAS, LPG and Oil (Kerosene)

Installers of Worcester, Valliant and Glow Worm boilers with up to 12 year warranty.

All types of Plumbing, Heating and Drainage

Boiler breakdown – Diagnostics and Repairs

Full bathroom design and installations

**Tel: 01959 577072  
Mobile: 07831 641664  
07957 940905**

e-mail: davidruddandson@hotmail.com

We pride ourselves on our workmanship. WRAS Approved  
Institute of Plumbing  
ACIPHE RP







*Orchard  
Garden  
Maintenance*

*Making your garden a delight!*

- mowing
- weeding
- digging
- planting
- pruning
- hedge trimming
- pressure washing

**Phone: 01959 570244**  
Email: orchardgardening.tn16@gmail.com

# Church Registers

## FUNERALS

“The steadfast love of the Lord never ceases, His compassion never fails; every morning they are renewed”

**Rita Holman**

## Flowers for Church



If you would like to make a donation towards the cost of flowers in church for a particular week, to mark an anniversary or a special event, please contact either Caroline Budimir on 01959 576093 or the Parish Office on 01959 577816

## At St. Mark's.....

**Music At St. Mark's**

St. Mark's Music - songs and fellowship with a lively touch. Call Chris on 01959 700815 for more details

**Baby & Toddler Group**

Every Monday from 10.00 am in the Church Hall during school terms. Contact the Parish Office for details - 01959 577816 - or just come along.

**Home Groups**

Home groups meet every fortnight for fellowship and Bible Study. For more information contact the Parish office: 01959 577816

**Bell Ringing**

Please contact the Parish Office on 01959 577816

**1st Biqqin Hill Guides**

Please contact Rosemary Spurway on 01959 575717

# Squirrels

Squirrels can achieve anything they set their minds to – and they have lots of fun along the way.

The sessions are a brilliant opportunity for 4-6 year olds to take their first step into being part of Scouts, and it will help them get ready for the adventure of school too.

Sessions are packed with outdoors activities, fun, games, badges, laughter, and so much more.



## #SkillsForLife

Squirrels have fun and make friends while developing skills they'll use for the rest of their lives.

Minds are fizzing, energy and curiosity levels are sky high. This is the time to fill little ones' lives with **wow** and **wonder**, to set them climbing the tree – and who knows how far they'll reach?

## Activities

Earn badges, get active and embrace the challenge!

We tell stories and play games. Get active and explore the outdoors. Encourage asking 'why'. Fall down and get back up again. Squirrels laugh and learn new skills, almost without realising – young minds get fed all the best stuff.

You can expect your child to get involved in:

- Growing things
- Nature walks
- Stories
- Sleepovers
- Cooking
- Experiments
- Exploring
- Crafts
- Building

And more...



## Get involved

Find out more about Squirrels



# Scouts

1st Biggin Hill

Spaces now available

# Squirrels

Is your 4-6 year old ready for a big adventure?

Join Squirrels! Looking for a place where your little one can build confidence, get active, and make friends for life? Our Squirrel Scout drey in Biggin Hill is the perfect place to start!

What we do every week:

- Learn New Skills – From campfire cooking to basic first aid.
- Make New Friends – Building social skills in a supportive team.
- Explore the Outdoors – Getting muddy and curious about nature!

Why choose Scouting?

We don't just play games (though we do a lot of that!). We give young people the "Skills for Life" the confidence for that first school speech, the resilience for big challenges, and the teamwork needed for the future.

Whether it's camping, hiking, or just hanging out with friends, every session is a new discovery.

Where: 200 Main Rd, Biggin Hill, Westerham TN16 3BB

When: Mondays: 17:00 – 18:00 or Thursdays: 17:15 – 18:15

Webpage: [1stbigginhill.scoutsonline.co.uk](http://1stbigginhill.scoutsonline.co.uk)

Phone:- 01959 700974

Caroline  
Smithson  
Reflexology

Are you looking for relaxation, improved quality of sleep, boosted energy levels and restored vitality?

Reflexology is a natural route to improved well-being. Pressure is applied to areas of the feet, enhancing the body's own healing process to optimise both physical and emotional health.

To book a treatment please contact  
 Caroline IIR MAR  
 07870 568 615

**CAR - BODY - PAINT - CORRECTION**  
 Cosmetic vehicle repairs - Smart repair plus+

**Avoid lease return cost  
 and protect your no claims bonus**

Bumper scuffs, scratches, wheels, mirror and headlights - Paintless dent removal  
 Minor accident repairs - repaints  
 End of lease repairs and preparation  
 Valeting and machine polishing

CALL OR WHATSAPP US TODAY  
 AND GET A FREE ESTIMATE  
**07307 479799**

Based in Keston Village  
 Collection/delivery available  
 Over 30 years experience

## SHIRLEY COX DANCE STUDIO

24, Aperfield Rd. Biggin Hill  
TN16 3LU

### MONDAY

7.00-8.00 Beginners Ballroom & Latin Class

8.00-9.00 Improvers Ballroom & Latin Class

### TUESDAY

7.30-9.30 Private Lessons

### WEDNESDAY

5.00-6.00 Children's Ballroom & Latin Classes

### THURSDAY

10.00-12.00 Coffee Dance (No instruction)

### FRIDAY

9.30-10.15 Fit Dance

4.15-5.00 Grade 1 Ballet &  
Grade 1 Gymnastic Dance

5.00-5.45 Grade 4 Ballet &  
Grade 2 Gymnastic Dance

6.00-6.45 Adult Tap

### SATURDAY

Private Lessons

All enquiries please tel: 01959 572859  
or email [info@shirleycoxdance.co.uk](mailto:info@shirleycoxdance.co.uk)

## Guarding the Green

Standing on the edges of Biggin Hill, it is hard not to feel a sense of calm. Fields stretch beyond hedgerows, birds circle above open farmland, and footpaths wind through landscapes that have remained largely unchanged for generations. These green belt areas are not simply empty land waiting for development. They are a living part of our community, and they deserve our care and protection.

The green belt surrounding Biggin Hill plays a vital role in preserving the character of our Village. It prevents urban sprawl, ensuring that our community does not become swallowed by the continuous expansion of London. The fields, woods, and open spaces create a natural boundary that allows Biggin Hill to retain its village atmosphere. Without this protection, the unique identity of our area could quickly disappear beneath housing estates and commercial developments.

Yet the green belt is not just about preserving scenery. It also sustains wildlife and biodiversity. Many species of birds, insects, and small mammals rely on these habitats to survive. Hedgerows provide nesting sites, meadows support pollinators, and patches of woodland offer shelter for countless creatures. When green spaces disappear, these delicate ecosystems are disrupted, often permanently.

For people, too, these spaces are deeply important. During the past few years, many of us rediscovered the value of nearby nature. Walking across open fields, cycling along country lanes, or simply pausing to watch the changing seasons brings a sense of peace that busy modern life rarely provides. The green belt offers a place for reflection, exercise, and connection with God's creation.

As a church community, caring for the land around us is part of our calling. The Bible reminds us that humanity was entrusted with stewardship of the earth. In Genesis we read that God placed humanity in the garden "to work it and take care of it." This responsibility continues today. Protecting the green belt is not only a civic concern but also a moral one.



Open land gives us space to breathe, to walk, to pray, and to remember that we are part of something larger than ourselves.

Of course, communities must grow and adapt, and the need for housing and infrastructure is real. But growth must be balanced with wisdom and foresight. Once green belt land is lost, it is impossible to restore. Development should therefore focus on brownfield sites and previously used land wherever possible, preserving open countryside for future generations.

If we value these spaces today, we must also be willing to speak up for them. Supporting

Melanie and friends fighting to save our fields

responsible planning, participating in local consultations, and encouraging thoughtful development are all ways we can help safeguard the countryside that surrounds our town.

The green belt is not merely land; it is a gift. By preserving it, we ensure that the beauty and peace we enjoy today will remain for those who come after us.

Let us continue to cherish, protect, and steward the green spaces of Biggin Hill—for our community, for God's creation, and for the generations yet to walk these fields.

Melanie Stevens

Five Elms PCN

## Biggin Hill Health and Wellbeing Café

Join us at our café for a health and wellbeing session as well as other activities.

The café will take place between 10am - 12pm on  
**the second Friday of each month** at

St. Mark's Parish Centre, Church Road, Biggin Hill, TN16 3LB  
**Friday 10<sup>th</sup> April**

Greener and Cleaner - advice and tips about being environmentally friendly at home and in the community

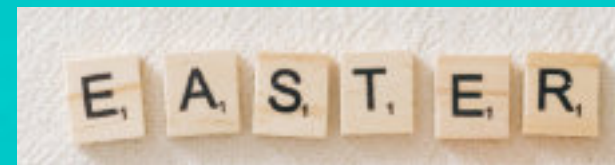
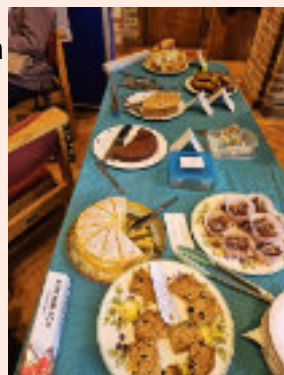
**Friday 8<sup>th</sup> May**

St. Christopher's - a talk about their services

All sessions include exercise, a quiz and bingo!

## St. Mark's Coffee Morning

Thanks to all those who came to the coffee morning in church on the 14th March. Over £200 was raised for the Maypole Project Easter appeal. The Maypole Project is a small local charity based in Green Street Green which supports children and young children with complex medical needs and their families.



## FRIDAY 3RD APRIL - GOOD FRIDAY

**Messy Church 10am to 12noon**

*Fun for all the family*

Crafts, including painting, sticking, colouring, a bit of gardening,  
Easter Egg hunt and refreshments.

You will have a great time - especially if you don't mind  
getting messy!

**With a Family Service at 11.30am in church.**

Afterwards Hot Cross Buns and drinks will be served.

**REFLECTIONS OF THE CROSS - 2pm**

A quiet, calm service of reflection

## SUNDAY 5TH APRIL - EASTER

(Not All Age Worship)

**10.30am Holy Communion**



# Hardy Annuals for Quick, Colourful Blooms!

For those of us without a heated greenhouse or even the ideal sunny windowsill, sowing annuals for the garden can seem a challenge. Not to worry—there are still plenty of ways to grow them and enjoy a wonderful display of colour throughout the summer.



There is a huge choice of hardy annuals available to whet the appetite and provide a long-lasting show. They are an easy and cost-effective way to grow plants that plug gaps, fill borders or brighten containers.

A hardy annual is a plant that is sown, flowers and dies within a single year. Unlike half-hardy annuals, they do not need the warmth or shelter of a greenhouse and will tolerate light

frosts. If a heavier frost is forecast, a simple covering of horticultural fleece will usually provide enough protection. Seed packets are often marked with the symbol **HA** (Hardy Annual); simply follow the sowing instructions on the packet.

The choice available from seed suppliers and local garden centres is extensive. If you are unsure where to start, ask for advice or look for reliable “good doers”. These include *Calendula officinalis* (pot marigold), *Tropaeolum majus* (nasturtium), *Cosmos bipinnatus*, and night-scented stocks (*Matthiola incana*). For something a little more unusual, consider *Amaranthus caudatus* (love-lies-bleeding), *Cerinth major* ‘Purpurascens’, or the elegant *Ammi majus*. All of these are also excellent for attracting pollinators and other beneficial wildlife into the garden.



Gardeners often notice that weed seedlings begin to appear during March. This is a useful sign that the soil is warming up and conditions are becoming suitable for sowing hardy annuals. If the soil is still wet and sticky, seeds can be started in trays or multi-cell modules and grown on in a cold frame or placed against a warm

house wall until they are ready to plant out.



Sowing can take place from mid-March through to late May in lighter soils. If your soil is heavy, adding grit will help improve drainage. Prepare a seed bed in the border between spring bulbs and emerging perennials or choose a patch in the vegetable or allotment plot. Level the ground carefully and remove any weeds before sowing. If you have a cloche available, placing it over the soil beforehand will help warm and dry the

surface.

Direct sowing is simple. Seeds can be scattered thinly across the bed and lightly brushed into the soil to ensure good contact. Alternatively, sow them in shallow drills. As the seedlings emerge, they require only minimal maintenance—keep weeds under control, water during dry spells and thin out seedlings if they become overcrowded.

Hardy annuals can also be sown in autumn to overwinter naturally in the garden. These plants often develop into stronger specimens, withstand winter weather and reward you with earlier flowers in late spring or early summer.

Of course, a few garden visitors may attempt to spoil the party. Slugs, snails, birds and aphids are always on the lookout for tender young shoots. Protect seedlings with fleece or netting, apply a garlic spray when sowing and add a layer of sharp grit to the soil surface until the plants are well established.

With very little effort, hardy annuals can provide a vibrant, cheap and colourful display that lasts for months—proving that even without a greenhouse, anyone can enjoy a flourishing summer garden.



Thank you

Nick Hagon (Chairman)  
Biggin Hill Horticultural Society

**Continued.....**

## Dates for your diary:

**Spring Flower Show Saturday 28<sup>th</sup> March**, doors open at 3pm, presentations start at 4.15pm. Refreshment, seating and enjoy the afternoon in the company of other likeminded people.

**Wednesday April 15<sup>th</sup>** Gardeners Evening presents "Growing Dahlias for Show and in the Garden by Bryan Everest.

**Saturday May 16<sup>th</sup>**, Plant Sale, doors open at 10am and close at 12 noon.

**Wednesday May 20<sup>th</sup>**, Gardeners Evening presents "Nocturnal Creatures Visiting our Parks and Gardens", by Dr Iain Boulton.

All the above events are at St Marks Church Hall, Church Road. Evenings from 8 to 10 pm (doors open at 7.30) unless stated otherwise. Refreshments, garden sundries, plants to purchase and a raffle are available.

Should you wish to know about the Biggin Hill & District Horticultural Society, become a member or join the Biggin Hill Friends of the Parks, please contact Nick Hagon 01959 575799 between 6.30 and 9pm.

Enjoy your gardening! Nick Hagan

# THE MOVING CHURCH NEWS

IS THE PARISH MAGAZINE OF

## St. MARK'S CHURCH, BIGGIN HILL

St. Mark's is known as the "Moving Church" as in the 1950's it was constructed from materials brought from the redundant church of All Saints North Peckham. This remarkable feat of dismantling and building carried out by local Biggin Hill people was accomplished through the initiative and vision of the then vicar, The Revd. Vivian Symons. He mobilised the local parishioners to create a truly worthy parish church in place of their ageing corrugated iron building. This fascinating story is recounted in an illustrated colour guide available from the Church.

St. Mark's is a pilgrim church; we do not simply accept the status quo, we are on a spiritual journey as pilgrims of old, actively seeking to draw closer to God and discover His will both in our own lives and the life of our local church and community which we love and serve. We are anxious "not to store up treasures here on earth" but to use all our church resources given by God, in His service and for His glory.

We want to share the good news of God's love in Jesus Christ with all those in our parish and neighbourhood. Hopefully this is portrayed by the way we live our lives, and speak to others.

We respect that we are all children of God, and we want to discover Christ in each other, encouraging personal growth in our individual relationship with each other and with Jesus.

Worship is an integral part of our love for God, and we want our services to reflect dignity and sensitivity as well as joy and thanksgiving.

## Keeping IT Simple

*Solving all your technical support worries, calmly and patiently  
in your own home, by someone who cares*

- > New Device Setup
- > Instruction & Tuition
- > Cleaning & Cooling
- > Virus & Malware Removal
- > Hardware Upgrades
- > Remote Support
- > Small Business Support
- > WiFi Routers & Networking
- > Cloud Storage
- > Data Backup
- > Data Recovery
- > E-mail Support
- > PCs & Laptops
- > WiFi Devices
- > Printers
- > Smartphones
- > Tablets
- > Televisions

**07375 416 176**

dan@kisit.co.uk - www.kisit.co.uk

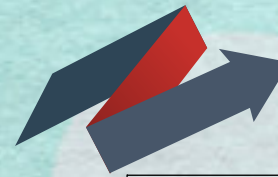


### St. Mark's Church, Biggin Hill - People's Prayer

Dear God in Heaven who loves us so much,  
Thank You for everything You do and provide for us.  
We pray for Your church and community here in  
Biggin Hill, that we may know Your plans for us  
in this special town.

Especially, we pray for help in bringing all Your  
children to You, so they may come to know You fully,  
through our actions enabled by Your Spirit,  
And through the life, teaching and example of  
Your Son, our Saviour, Jesus Christ. Amen

Age UK - Bromley & Greenwich	0208 315 1850
Benefit Enquiry Line	0800 88 22 00
Biggin Hill Aperfield W.I.	01959 571360
Biggin Hill Community Care Association	01959 577400
Biggin Hill Councillors: Melanie Stevens	07900 171266
Sophie Dunbar	07929 365228
Jonathan Andrews (Darwin)	07811 313 559
Biggin Hill Evening W.I.	01959 700973
Biggin Hill Horticultural Society	01959 575799
Biggin Hill Library	01959 528053
Biggin Hill Musical Theatre Company	01959 701829
Biggin Hill Residents Association	07763 215037
Biggin Hill Rangers, Guides, Brownies and Rainbows	01959 575717
Biggin Hill Romanian Group	07802 575417
Biggin Hill Society	01959 572569
Biggin Hill Scout Group	07983 447721
Bromley Council – Office Hours	0208 464 3333
Bromley Council - Emergency out of hours	0300 303 8671
Bromley Social Services --- child referrals	0208 461 7373
Bromley Social Services --- adult referrals	0208 461 7777
Childline (confidential helpline for children)	0800 1111 (24 hr)
Citizen's Advice Bureau (Bromley)	0208 315 1940
Community Links, Bromley	0208 315 1900
Crimestoppers	0800 555 111
Dial-a-Ride (For registration and enquiries)	0343 222 7777
Doctor's Surgeries –	
Stock Hill Surgery	01959 580011
Norheads Lane Surgery	01959 574488
Domestic Violence - 24hr Helpline	0808 2000 247
Electrical power cut - to be connected to the local network operator	105
FOAL Farm (Friends of Animals League)	01959 572386
GAS Emergency 24 hr freephone	0800 111 999
National Childbirth Trust (Biggin Hill)	01959 701765
01959 572209 or	01959 571667
New Life Church	111
NHS help line when you need medical advice	101
Police: Non Emergency Reporting	101
Local Safer Neighbourhood Team:	020 8721 2820
Princess Royal University Hospital	01689 863000
RAF Biggin Hill Memorial Museum & Chapel	01959 422414
St. Mark's Parish Office	01959 577816
Schools - Biggin Hill Primary	01959 575846
Charles Darwin Secondary	01959 574043
Cudham Primary	01959 572673
Oaklands Primary	01959 573963
Tatsfield Primary	01959 577356
Samaritans (Local branch) - 01689 833 000	24 hr - 08457 90 90 90
Textphone for hard of hearing	08457 90 91 92
Spitfire Youth Centre	01959 574835
St. John Ambulance	01959 701281
St. Theresa's Church	01959 563226
Thames Water	0845 920 0800
Trading Standards Rogue Traders Rapid Response	07903 852 090
Valley Hall Community Association	01959 573917/570020
Victim Support Scheme	0208 776 7071
Westerham Hill Baptist Church	01732 867516



## The Next Moving Church News

Month	Deadline	Issued from
June - July	15 <sup>th</sup> May	31 <sup>st</sup> May
Aug - Sept	17 <sup>th</sup> July	2 <sup>nd</sup> August
Oct - Nov	11 <sup>th</sup> September	27 <sup>th</sup> September
Dec 26 - Jan 27	13 <sup>th</sup> November	29 <sup>th</sup> November

The Moving Church News is published every two months. For more information or for advertisement enquiries please contact Neil Walker - neil.walkerz@gmail.com - 01959 700815 or through the Parish Office

Contributions are welcome especially from local community groups or schools. Please contact Neil as above.

Parish office: 01959 577816

Email: admin@movingchurch.org

St Mark's website: [www.movingchurch.org](http://www.movingchurch.org)



st mark's biggin hill - 'the moving church'

**ADVERTISE HERE!**  
An ad in full colour costs from just £66 per year.

3000 copies of the Moving Church News are distributed in Biggin Hill every 2 months

Provide your own material or we will design an a basic ad for you

Contact Neil for more details

01959 700815

neil.walkerz@gmail.com

Keeping up with everything at St. Mark's.

If you want to receive a regular email giving all of the details of events and services at St. Mark's please send your details to Chris Walker. Her email is chris.walkerz@gmail.com. Your email address will not be passed on to anyone else.

EST. 1881

# •W•UDEN & SONS•

FAMILY FUNERAL  
DIRECTORS

---

SERVING FAMILIES ACROSS LONDON,  
SURREY AND KENT

HOME VISITS AVAILABLE

---

BIGGIN HILL, 186 MAIN ROAD  
01959 573 130

---

BECKENHAM • BEXLEYHEATH • BIGGIN HILL  
BROMLEY • CAMBERWELL • DULWICH  
ELTHAM • ORPINGTON • PETTS WOOD  
SIDCUP • WEST WICKAM



f@@UDENFUNERALS  
WUDEN.COM